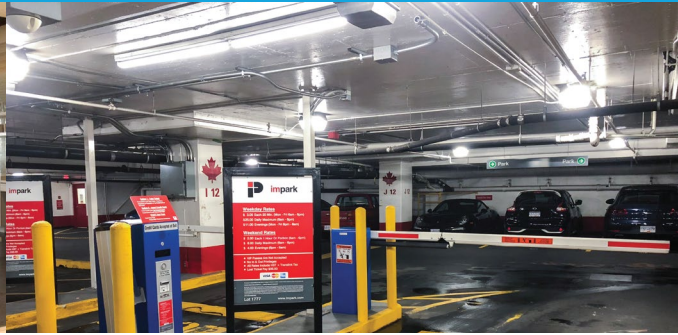


RBC ROYAL CENTRE



CHALLENGE

Royal Centre in downtown Vancouver, BC provides a variety of services within their complex: Food courts, retail shopping, parking, offices, and most importantly, the Western RBC headquarters. In total there were 40 floors that had dimly lit and uneven lighting, including underground parking and emergency stairwells which were contributing to high costs with their need to be on 24/7. Inefficient lighting was contributing to tenant frustration, high lighting bills, and ongoing maintenance and repair costs.

SOLUTION

Radiance Energy replaced the existing lights with an improved LED solution throughout the entire RBC Royal Centre. All 40 floors of office space now have an improved, healthier work environment, as the 64W bulbs were replaced with a 10-15W sensor solution that is flicker-free. The 24/7 lighting required in the emergency stairwells, hallways, boiler and maintenance rooms are receiving massive cost savings with the improved and efficient LED solution. Underground parking, previously using 410W bulbs, were replaced with a custom solution of 42W - providing over 90% in energy cost savings while improving lighting output by over 50%.

PROJECT SUMMARY

- Provided 90% savings in underground parking
- Replaced 64W with 10-15W sensor solution
- 10 year warranty and 20 year life expectancy
- Improved tenant satisfaction and wellness